

NEWT TOOLING!

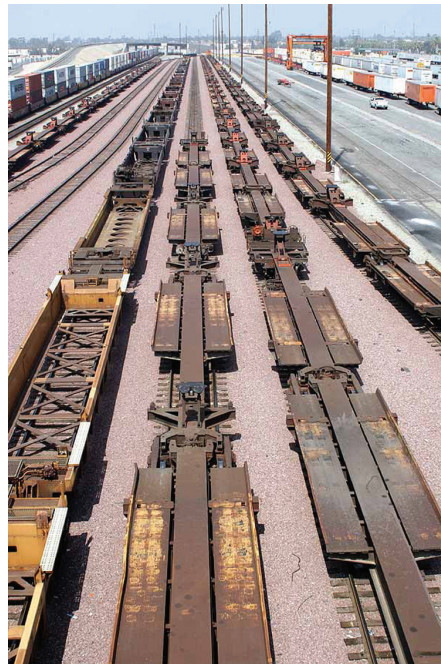
NEWT TOOLING!

"Executive Line" HO Ready To Run 53' "RAF53C" Spine Cars

The spine cars are one of the most recognizable freight cars on the rails today. Named after their simple, spine-like appearance, these versatile cars carry anything from highway trailers, to international, corrugated containers. Built in late 1997 by Trinity Rail for TTX, these 5-Unit Spine Car's feature TTAX reporting marks. While very similar to other 53' Trinity Spine Cars, the "RAF53C" class boasts nearly 250, 5-car sets on the TTX roster.

Features

- Ready-To-Run
- Die-Cast Metal & Plastic
- Fine-Scale Detail All Around
- Chemically Etched Walkways
- Accurately Painted/Printed
- Collapsed or Raised Hitches!
- KD (R) Couplers
- Seven Unique Numbers!



Trinity "RAF53C"
5 Unit Spine Car Set
MSRP 164.95

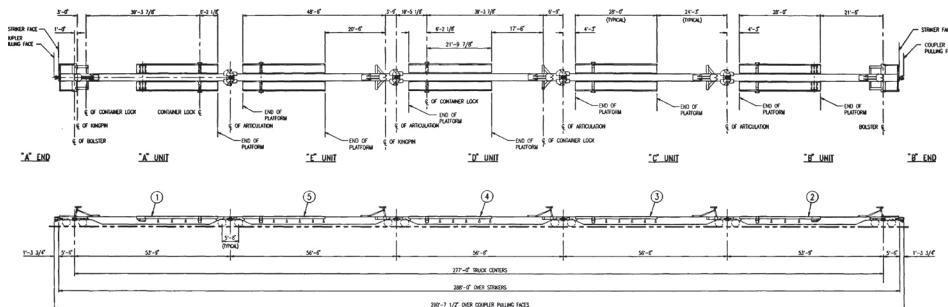
#40612	TTAX	Road #555009
#40613	TTAX	Road #555035
#40614	TTAX	Road #555074
#40615	TTAX	Road #555092
#40616	TTAX	Road #555128

Trinity "RAF33"
3 Unit Spine Car Set
MSRP 99.95

#40617	TTAX	Road #355005
#40618	TTAX	Road #355076

ETA January 2012
Pre-order by July 15, 2011

RAF53C 5 Unit Trinity Spine car



RAF33 3 Unit Trinity Spine car

