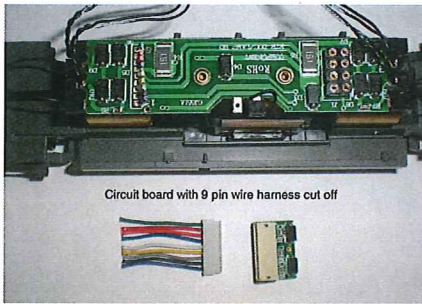


# Instructions for Athearn Loco Retro Fit Sound Kits

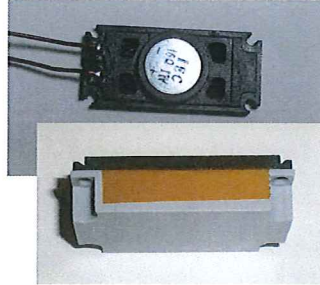
## #691-1301 & 1306

**Recommend using Kapton Tape. Do not use black electric tape**

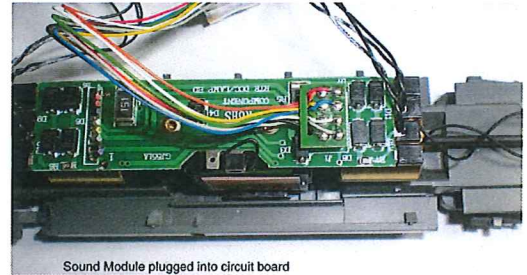
Remove the body shell  
and cut off the 9 pin plug



Solder the brown wires from the  
decoder to the speaker. Tape to  
enclosure as shown.



Plug in decoder  
See photo below



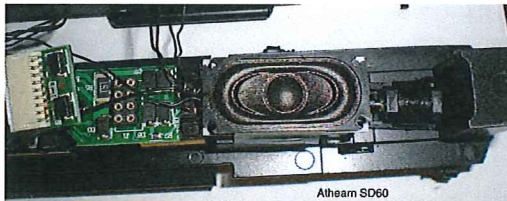
### CF-7, GP-35, GP-38-2, GP-40-2, GP-40X

Locate the speaker close to the rear wall of the loco.  
Hold to top of body with double sided tape.  
Be careful of light wires



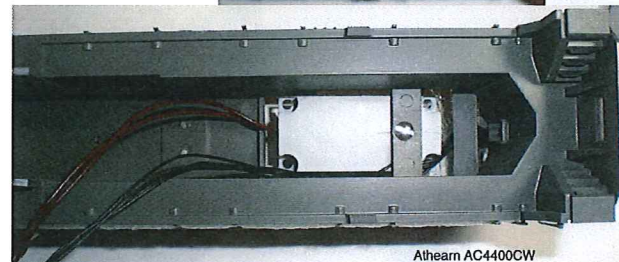
### SD-50, SD-60

Tape or glue to the cast frame.  
See photo

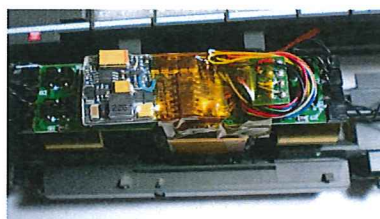


### AC 4400 CW, Dash 9-44CW, C44-9W

Drill hole as shown below. Tape speaker like above  
Fasten to cross member with 2-56 x 3/16 screw



**Last**  
Gather wires and tape  
as shown.



**Bowser Mfg, PO Box 322, Montoursville PA 17754**