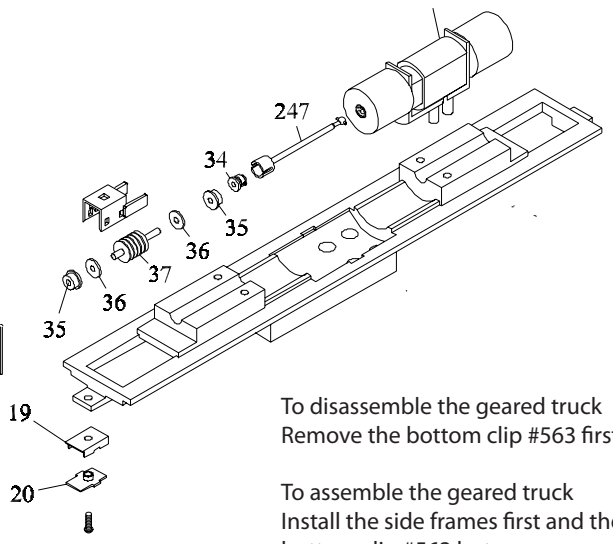
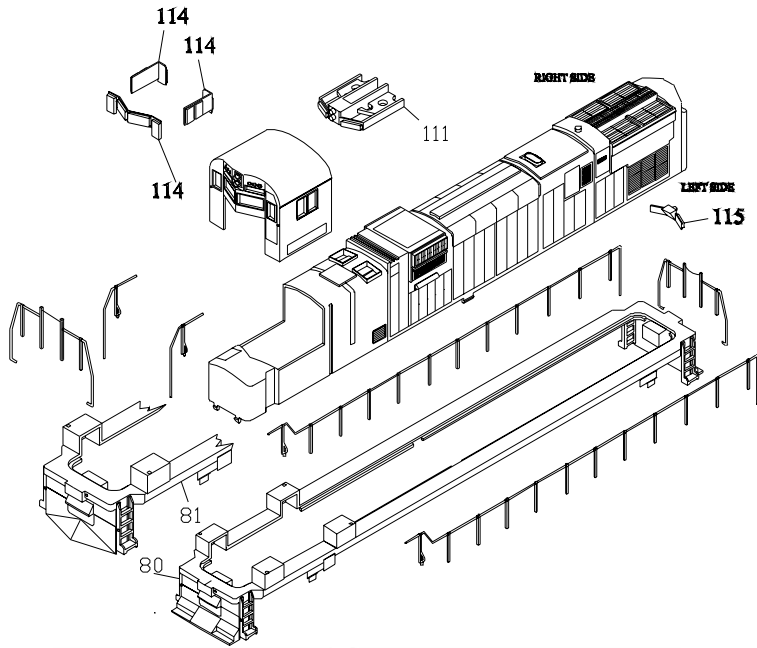
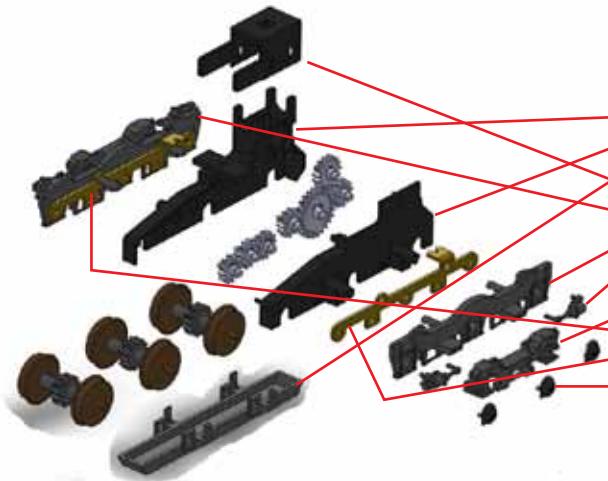


# Alco C-636 Executive



To disassemble the geared truck  
 Remove the bottom clip #563 first

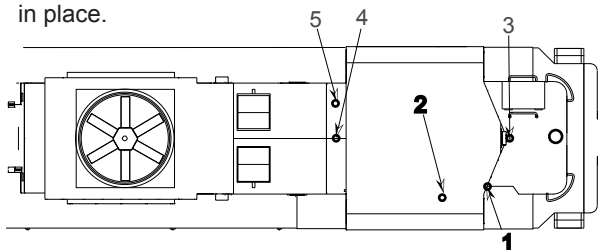
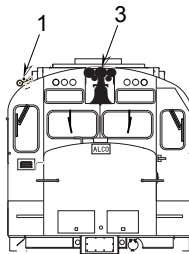
To assemble the geared truck  
 Install the side frames first and the  
 bottom clip #563 last.  
 Bottom clip has posts that retain the  
 side frames and will break if you pull  
 the side frame out first.



- 691-561 Hi ad gear case worm side
- 691-562 Hi ad gear case cover
- 691-563 Hi ad gear case retainer clip
- 691-564 Hi ad Worm gear cover
- 691-565 Hi ad Sideframe A Side
- 691-566 Hi ad Sideframe B Side
- 691-568 Hi Ad Brake Cylinders (ABS)
- 691-569 Hi Ad Frame Detail Side A
- 691-570 Hi Ad Frame Detail Side B
- 691-571 Hi ad Pickup Side A
- 691-572 Hi Ad Pick up Side B
- 691-586 Roller Bearing Journals for Tri and Hi Ad Trucks
- 691-587 Speed Recorder Journals for  
 Tri and Hi Ad Trucks - not shown

## ALCO C-636 Horn Location

Due to breakage the horn in packed in a poly bag.  
 Dry fit the horn or bracket first (press in place).  
 Remove horn, apply a small amount of super glue to the post and press  
 in place.



FACE OF CAB  
 LOCATION: 1

CAB ROOF  
 LOCATION: 2  
 ILLINOIS CENTRAL

ROOF BEHIND CAB  
 LOCATION: 4  
 N Y S & W

DEMONSTRATOR  
 S P & S  
 BURLINGTON NORTHERN  
 DELAWARE-LACKAWANNA  
 PC-CONRAIL PATCH  
 M K LEASING  
 CONRAIL  
 PENN CENTRAL

FACE OF CAB  
 LOCATION: 3  
 CARTIER

ROOF BEHIND CAB  
 LOCATION: 5  
 S I X X