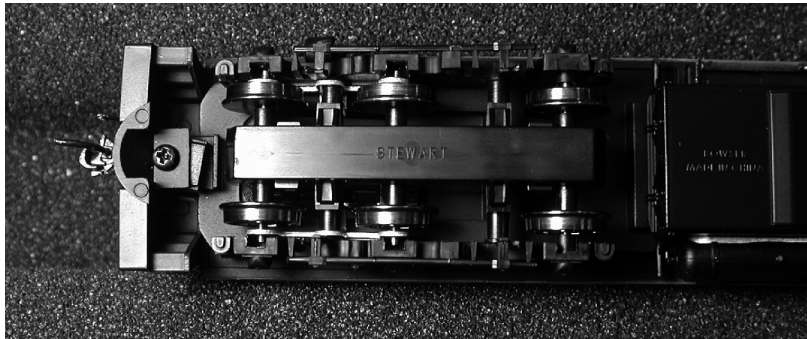


Executive Line AS-16 and AS-616 locomotives

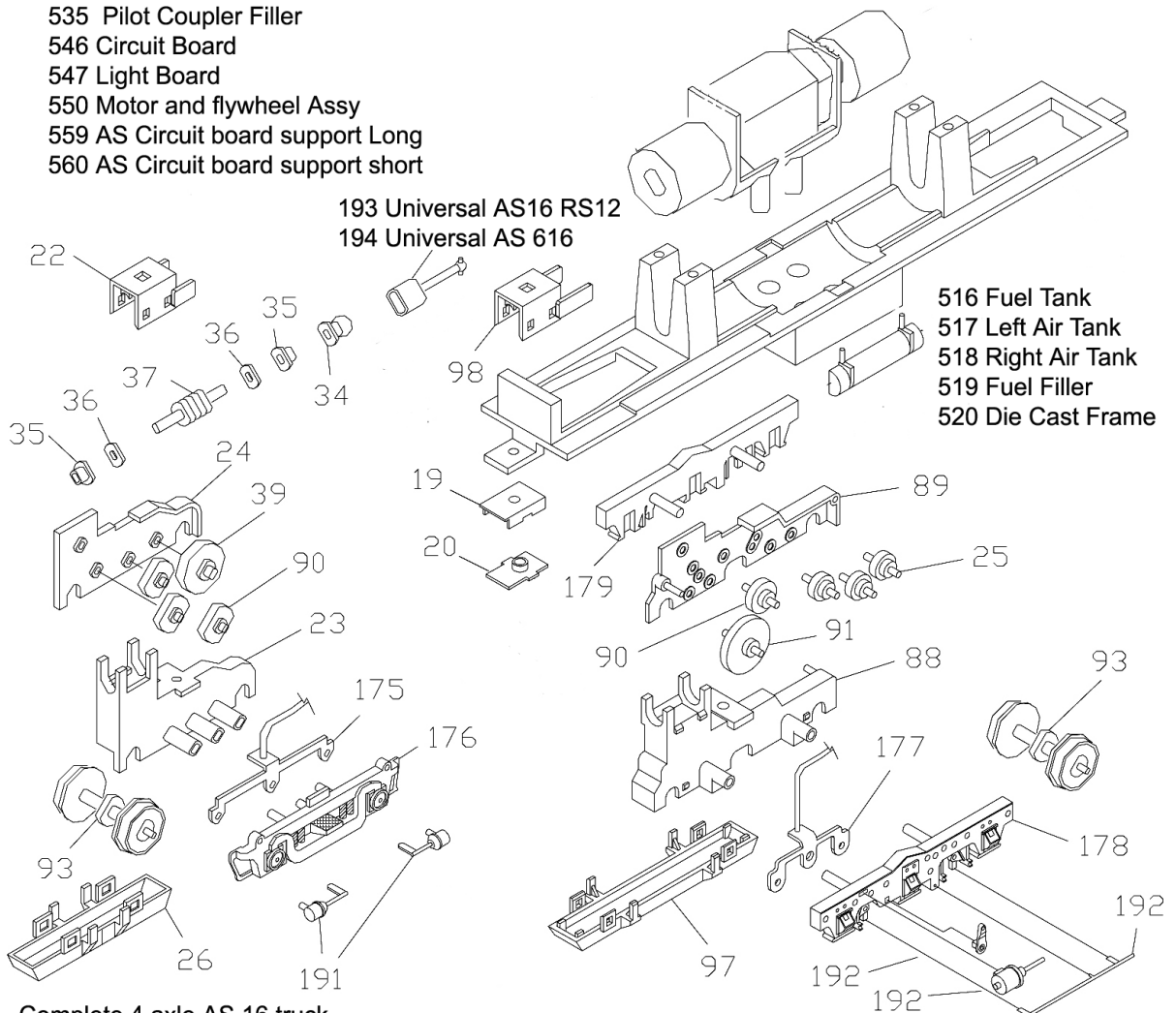
To Remove the Body

Remove the 2 screws holding the coupler pocket to the frame.
The mechanism will slide out of the body.



Decoder: 8 pin plug is installed on the circuit board. Use your favorite brand.

- 535 Pilot Coupler Filler
- 546 Circuit Board
- 547 Light Board
- 550 Motor and flywheel Assy
- 559 AS Circuit board support Long
- 560 AS Circuit board support short



- 193 Universal AS16 RS12
- 194 Universal AS 616

- 516 Fuel Tank
- 517 Left Air Tank
- 518 Right Air Tank
- 519 Fuel Filler
- 520 Die Cast Frame

Complete 4 axle AS 16 truck
with worm and worm cover #691-195 pair
Enough for one loco

Complete 6 axle AS-616 truck
with worm and worm cover \$691-196 Pair
Enough for one loco