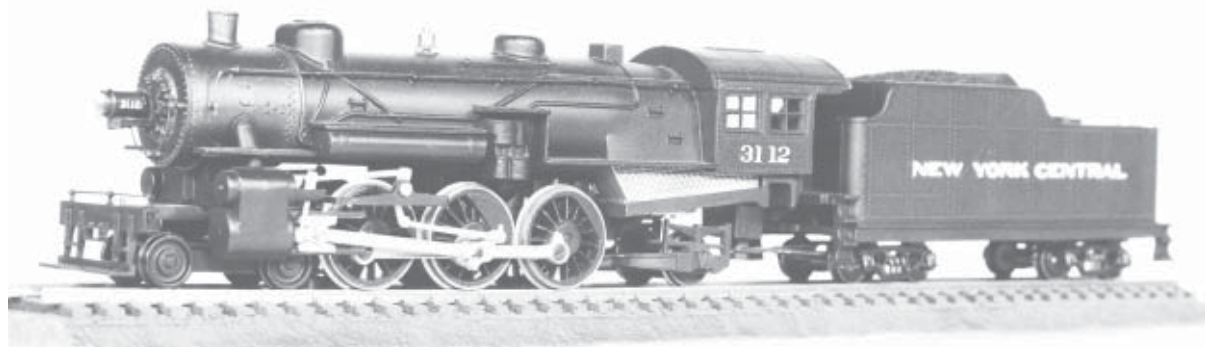


# NYC K-11 PACIFIC 4-6-2



## PROTOTYPE SPECIFICATIONS

|                                      |              |
|--------------------------------------|--------------|
| Builder                              | ALCO         |
| Cylinders                            | 26" x 26"    |
| Steam Pressure                       | 180 lbs.     |
| Tractive force                       | 38,970 lbs.  |
| Weight of engine<br>in working order | 272,000 lbs. |
| NYC Loco Numbers                     | 4570 - 4599  |

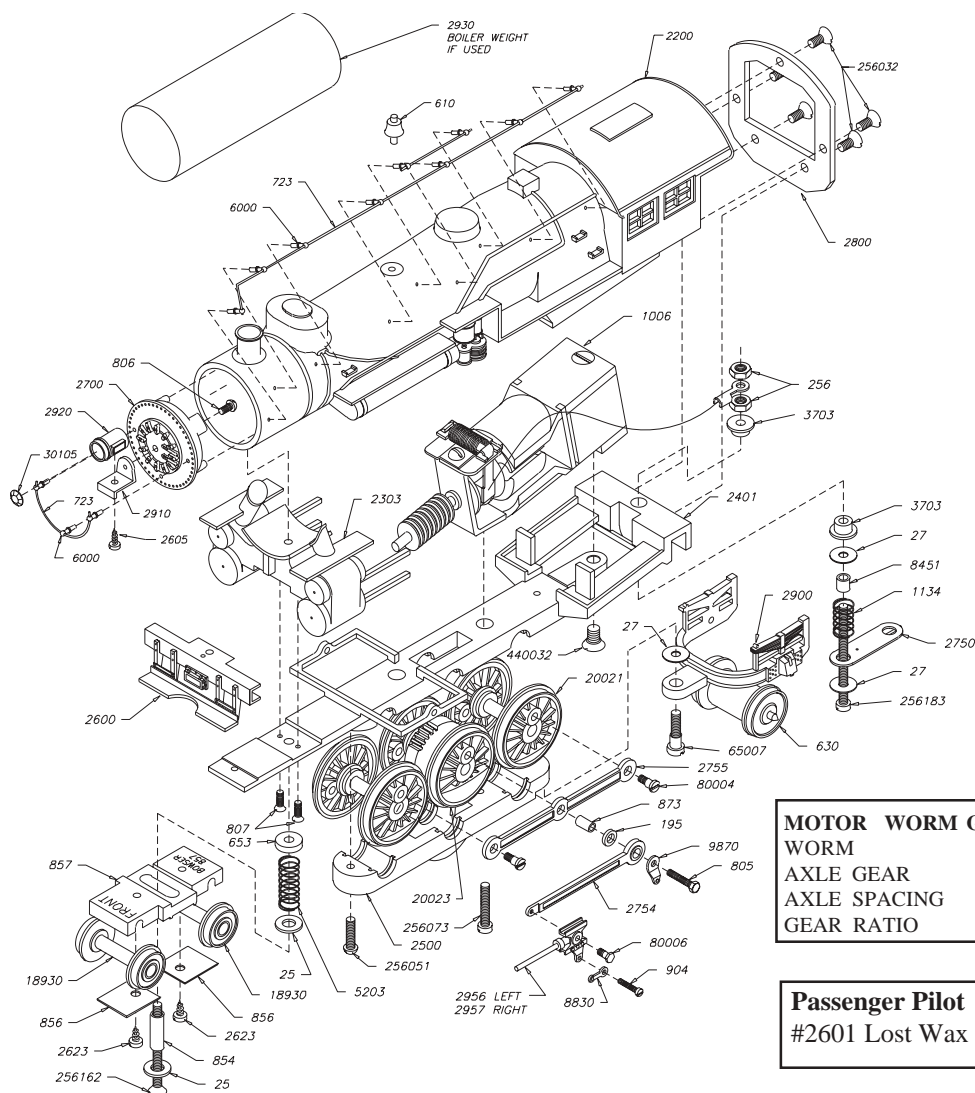
## MODEL SPECIFICATIONS

|                    |                    |
|--------------------|--------------------|
| Length with Tender | 10-7/8"            |
| Height             | 2-1/2"             |
| Weight             | 11b 13oz.          |
| Minimum radius     | 18"                |
| Power              | Bowser DC-71 motor |
| Drivers            | 69"                |

## Kits available

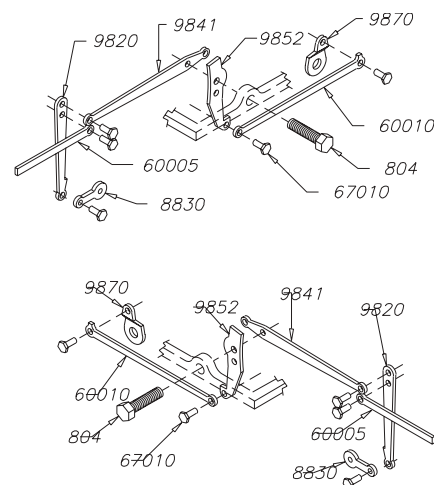
- #100200 NYC K-11 Pacific  
w/ Tender, Kit
- #100210 Superdetail Kit
- #500205 Assembled valve gear

## LATEST VERSION OF K-11 PACIFIC



## VALVE GEAR

|           |         |
|-----------|---------|
| KIT       | #100205 |
| ASSEMBLED | #500205 |



## Pilot Coupler:

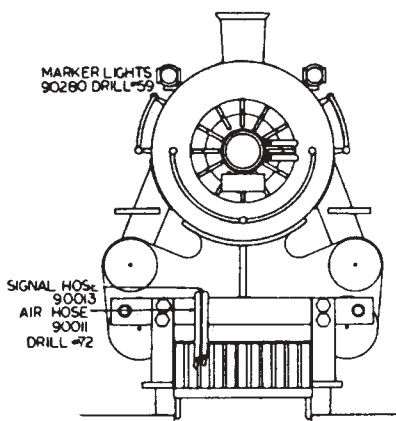
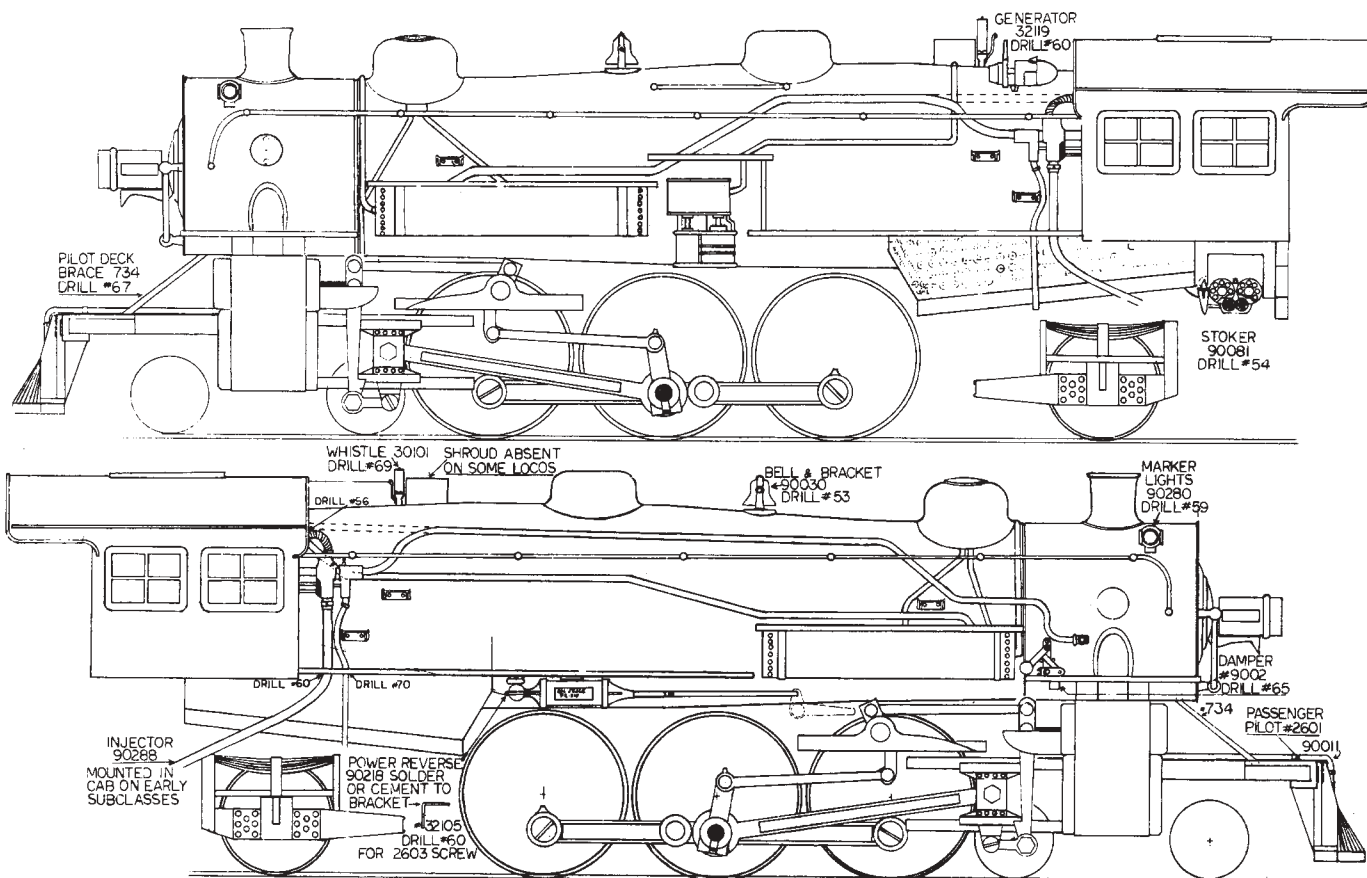
Use Kadee® #7 coupler and pocket. For either #2600 freight or #2601 passenger pilot, cut off metal couler pocket extending down from pilot beam and file smooth. Drill front hole (not rear hole which mounts to frame) with a #56 drill through pilot and tap with a 0-80 tap. Screw Kadee® pocket on from bottom using 0-80 screws. Cut off excess screw and file flush with top of pilot.

| MOTOR WORM GEAR |       |
|-----------------|-------|
| WORM            | 51106 |
| AXLE GEAR       | 51005 |
| AXLE SPACING    | .875  |
| GEAR RATIO      | 31-1  |

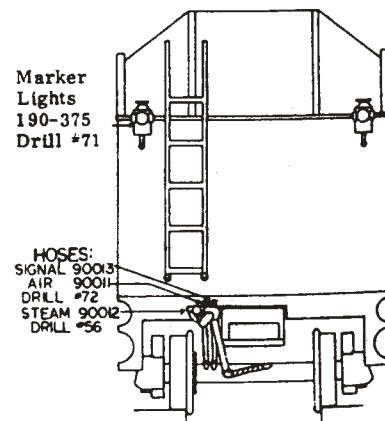
**Passenger Pilot**  
#2601 Lost Wax Brass

# NYC K-11 PACIFIC 4-6-2

## SUPER DETAIL KIT #100210



| PART #  | AMOUNT | DESCRIPTION                     |
|---------|--------|---------------------------------|
| 744     | 2      | Piping wire                     |
| 2601    | 1      | Passenger pilot                 |
| 2603    | 1      | Pk. 12, 0 x 5/32 ST screw       |
| 7501    | 1      | Pr. marker lights               |
| 7510    | 4      | Pk. 10 markerlite jewels, Red   |
| 7520    | 4      | Pk. 10 markerlite jewels, Amber |
| 7530    | 2      | Pk. 10 markerlite jewels, Green |
| 7550    | 2      | Pk. 10 markerlite jewels, Clear |
| 30101   | 1      | Whistle, modern large           |
| 32105   | 1      | Air compressor bracket          |
| 32119   | 1      | Sunbeam generator               |
| 90010   | 1      | Hose set                        |
| 90020   | 1      | Damper valve                    |
| 90030   | 1      | Bell & bracket, pull rope       |
| 90081   | 1      | Stoker motor                    |
| 90218   | 1      | Power reverse                   |
| 90288   | 2      | Lifting injector                |
| 190-375 | 1      | Pr. markerlites                 |

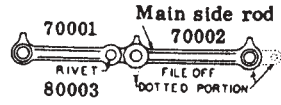


**Marker Light Jewels:** Rule of thumb:  
Green to front, amber to side and red to rear.

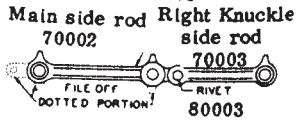
# NYC K-11 PACIFIC 4-6-2

Old style K-11 using DC-60 motor  
or the Super Motor

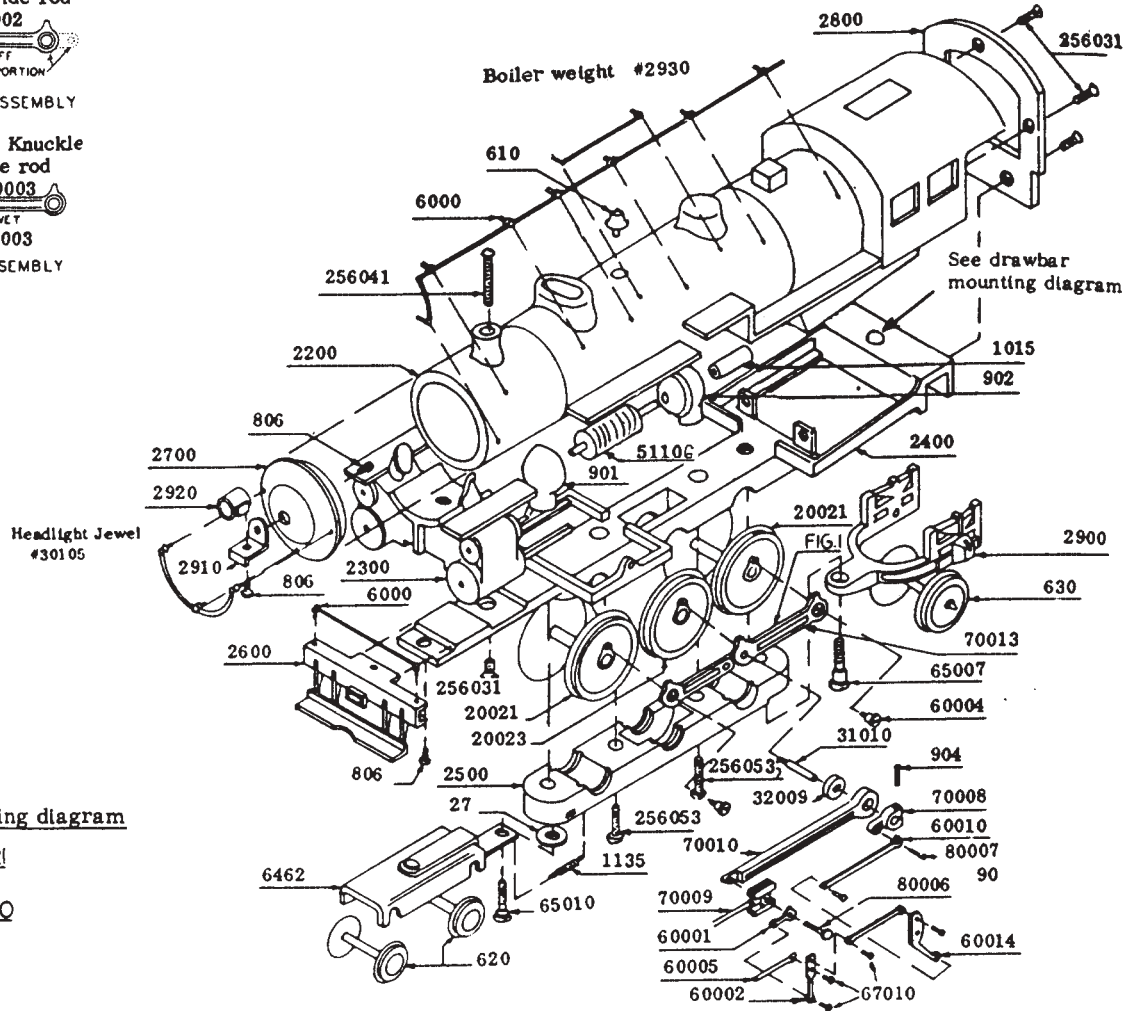
#70013 One pieces Side Rod  
Replaces 70001, 70002. 70003



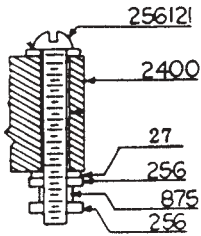
PACIFIC SIDE ROD ASSEMBLY  
LEFT SIDE



PACIFIC SIDE ROD ASSEMBLY  
RIGHT SIDE



Drawbar mounting diagram



Drawbar slips  
over 875 spacer

