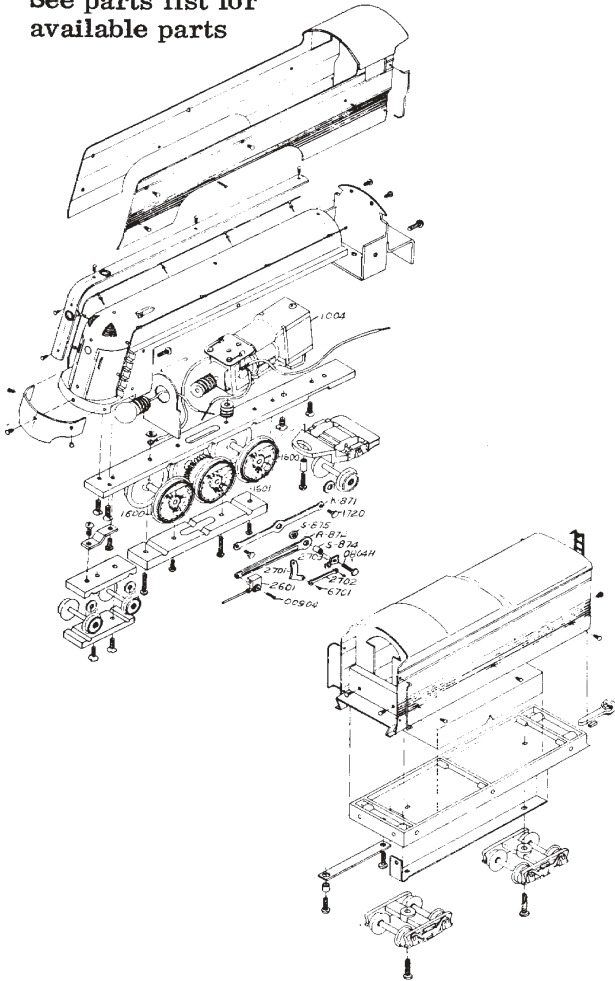
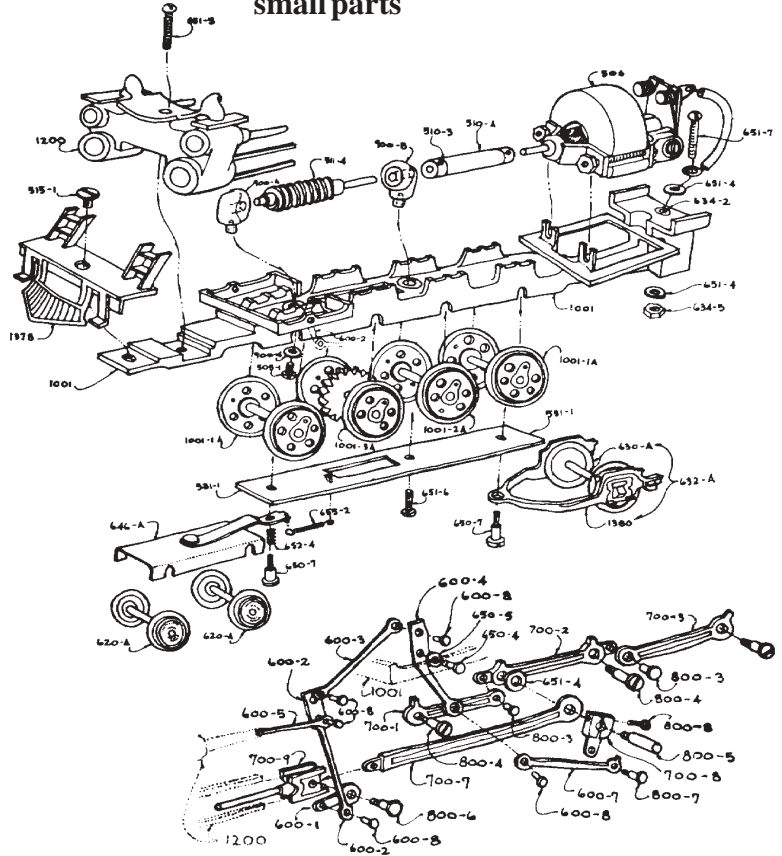


Original Penn Line Crusader-NOT AVAILABLE
See parts list for available parts



Original Brass Mountain
Brass casting not available only small parts



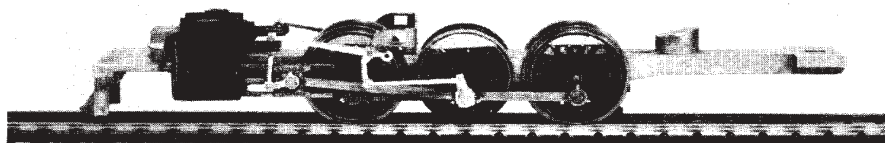
Original Bowser Mountain-NOT AVAILABLE
See parts list for available parts



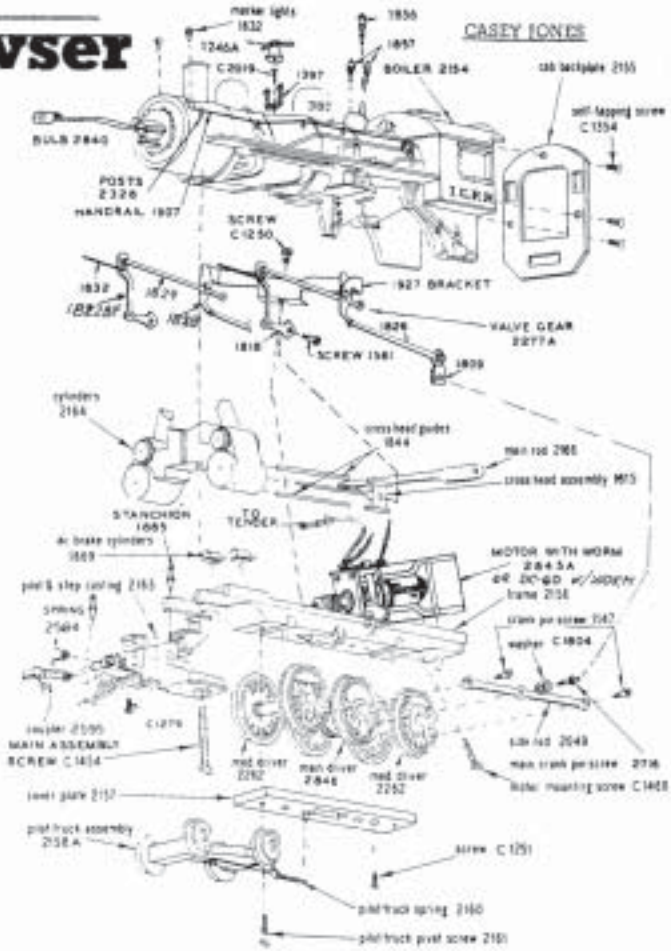
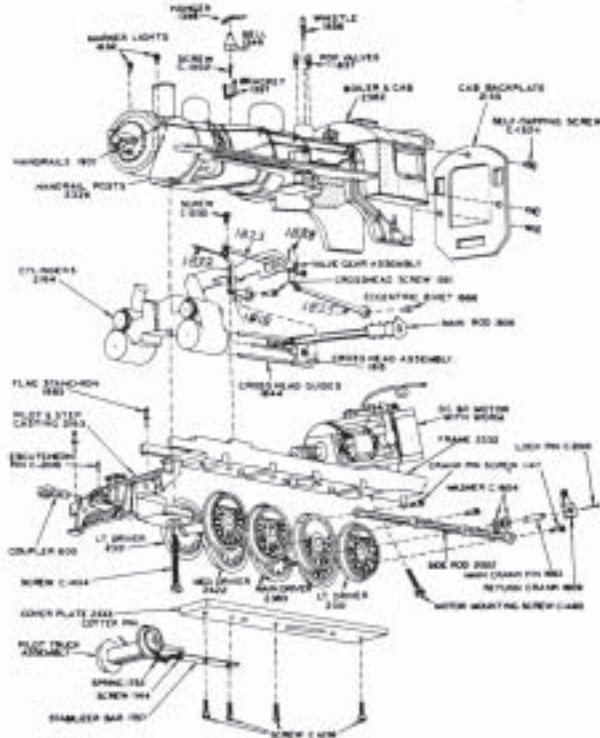
BOWSER SUBSTITUTE VALVE GEAR for John English locomotives - We have NO CONNECTION with John English so DO NOT ORDER any OTHER parts for these engines

PACIFIC 4-6-2	
2	804 Main crank pin screw
2	873 Spacer - Main & side rods must be reamed for this
1	1927 Valve hanger
2	8820 Combination lever - must be bent to fit between valve rod guides
2	8870 Eccentric crank
2	31004 Radius rod
2	60001 Crosshead link
2	60009 Eccentric rod
2	60014 Reverse link
12	67010 Hex head valve gear rivets
2	80006 Crosshead screw
NO VALVE ROD NECESSARY	

MIKADO 2-8-2	
2	805 Main crank pin screw
2	873 Spacer - Main & side rods must be reamed for this
2	904 Screw, 00-90 x 1/4"
2	8820 Combination lever - must be bent to fit between valve rod guides
1	9840 Radius rod
2	9850 Reverse link
2	9860 Eccentric rod
2	9870 Eccentric crank
1	9880 Valve hanger & crosshead guide support. Frame must be filed where 9880 locates in order to lower hanger so main rods will not rub on supported guide.
2	60001 Crosshead link
10	67010 Hex head valve gear rivets
2	80006 Crosshead screw
NO VALVE ROD NECESSARY	



'00 OLD LADY' Bowser



PARTS AVAILABLE FOR CASEY JONES AND OLD LADY

Varney Part#	Bowser Part#	Description
600		Plastic coupler-use Selley #58 metal coupler
1144	1720	Stabilizer bar screw/hex hd/100 long/cut off
1147	80008	Crank pin screw (hex hd)-use #35 wrench
C1250	256021	Valve gear bracket screw
C1251	256032	Screw, 2-56 x 3/16" FH
C1259	254061	Cover plate screw
C1260	254052	Screw, 2-56 x 5/16" FH
C1279	256031	Screw, 2-56 x 3/16" RH
1353	329	Tender truck screw
C1354	256052	Screw, 2-56 x 5/16" FH
C1460	440082	Motor mount screw-too long, cut off 1/8"
1561	80006	Crosshead screw-year crosshead link to fit
1632	1832	Marker light-Bowser is metal, need glue
1685	31010	Main crank pin-use w/D-80 nut&10008eccentric
1756	1756	Pilot truck casting-use yourwheels or 2 #621
1770	6000	Handrail posts
C1793	32009	Washer
1808	1808	Main rod
1809	70008	Eccentric crank-need 904 screw & 90 nut & 80007 rivet. Can be used with 1845, 2276 or 2716 crank pins. See drawing.
1815	1815	Crosshead
1818	1818	Crosshead link
1822	1822	Combination lever
1823	1823	Radius rod
1824	8840	Radius rod*
1825	60007	Eccentric rod
1826	60010	Eccentric rod*
1832	80005	Valve rod
1844	866	Crosshead guides
1856	3231	Whistle
1857	1857	Pop valve
1869		Air brake cylinder, use Selley #928
1907	723	Handrail wire
1927	1927	Valve hanger-rebuild mounting bracket
C2017	904	Screw, CO-90 x 3/16"
2049		Side rod-no Bowser sub. spacing changed
2110A	70008	Eccentric-Bowser-see valve gear drawing
2154	2154	Boiler casting
2155	2155	Cab backplate-specify brass/ diecast frame
2156A	8140	Main frame-not satisfactory substitution as bearings are needed and old motor won't fit

Original Varney boilers will NOT fit on our Mechanisms.
Original Varney wheels CANNOT be used on Bowser frames.

2156A	2156	Pilot truck asy.-use 2158(casting only) with your wheels or #621
2160	1136	Pilot truck spring
2162	65010	Pilot truck rivet-use 65010 screw, tap pilot truck for 3-56, cut off screw & file flush
2163	2163	Pilot
2164	2164	Cylinder
2185	80006	Crosshead rivet-use 80006 screw,tap rod 0-80
2187		Main crank pin screw-no good sub.When using Bowser valve gear, use 805 w/873 and 875 specers. Enlarge holes in old rods.
2261	18070	Main driver w/gear-new gear requires worn 1030. If gear is good, we will quarter drivers w/your gear All drivers must be changed. New worn & gear will need shimming for good mesh.
2282	18000	Medium driver
2276	31010	Crank pin screw-
2277A	501105	Assembled valve gear, Casey Jones
2277A	101105	Valve gear kit, Casey Jones
2529	2529	Tender body
2530	2530	Tender underframe
2562	2562	Boiler-changes have been made to fire box.
2570	813	Drawbar
2594	4202	Spring for coupler 4201
2595	4201	Coupler w/o spring or use 4220 coupler
2716	31010	Main crank pin screw-use 70008 eccentric
2778	2778	Coupler pocket cover
2802	2802	Weight
2840	2840	Headlight-GOW bulb
2932	4220	Xlf coupler with integral spring
2977	20151	Brushes for DC60 motor
2985	2985	Tender trucks
30614		Brush tip for Jap motor(solder to your arm

* Note: The Bowser valve gear hanger mounts about 1/8" further back than Varney, but under same screw, hence eccentric and radius rods are a different length.